

Form **990**Department of the Treasury  
Internal Revenue Service**Return of Organization Exempt From Income Tax**  
Under section 501(c), 527, or 4947(a)(1) of the Internal Revenue Code (except private foundations)

▶ Do not enter Social Security numbers on this form as it may be made public.

▶ Information about Form 990 and its instructions is at [www.irs.gov/form990](http://www.irs.gov/form990).

OMB No. 1545-0047

**2013**Open to Public  
Inspection**A** For the 2013 calendar year, or tax year beginning **DEC 1, 2013** and ending **NOV 30, 2014****B** Check if applicable:

- ☐ Address change  
☐ Name change  
☐ Initial return  
☐ Terminated  
☐ Amended return  
☐ Application pending

**C** Name of organization**KENTUCKY BROADCASTERS ASSOCIATION, INC.**

Doing Business As

Number and street (or P.O. box if mail is not delivered to street address)

**101 ENTERPRISE DRIVE**

Room/suite

City or town, state or province, country, and ZIP or foreign postal code

**FRANKFORT, KY 40601****F** Name and address of principal officer: **GARY R. WHITE****101 ENTERPRISE DRIVE, FRANKFORT, KY 40601****D** Employer identification number**61-0663764****E** Telephone number**502-848-0426****G** Gross receipts \$ **1,130,339.****H(a)** Is this a group return for subordinates? ..... ☐ Yes ☒ No**H(b)** Are all subordinates included? ☐ Yes ☐ No  
If "No," attach a list. (see instructions)**H(c)** Group exemption number ▶**I** Tax-exempt status: ☐ 501(c)(3) ☒ 501(c)( 6 ) ◀ (insert no.) ☐ 4947(a)(1) or ☐ 527**J** Website: ▶ **WWW.KBA.ORG****K** Form of organization: ☒ Corporation ☐ Trust ☐ Association ☐ Other ▶**L** Year of formation: **1946** **M** State of legal domicile: **KY****Part I Summary**

Activities & Governance	1 Briefly describe the organization's mission or most significant activities: <b>TO PROMOTE THE BROADCAST INDUSTRY IN KENTUCKY</b>		
	2 Check this box <input type="checkbox"/> if the organization discontinued its operations or disposed of more than 25% of its net assets.		
	3 Number of voting members of the governing body (Part VI, line 1a)	3	19
	4 Number of independent voting members of the governing body (Part VI, line 1b)	4	19
	5 Total number of individuals employed in calendar year 2013 (Part V, line 2a)	5	3
	6 Total number of volunteers (estimate if necessary)	6	0
	7a Total unrelated business revenue from Part VIII, column (C), line 12	7a	0.
b Net unrelated business taxable income from Form 990-T, line 34	7b	0.	
Revenue	8 Contributions and grants (Part VIII, line 1h)	Prior Year	Current Year
	9 Program service revenue (Part VIII, line 2g)	10,485.	10,828.
	10 Investment income (Part VIII, column (A), lines 3, 4, and 7d)	1,354,449.	1,064,321.
	11 Other revenue (Part VIII, column (A), lines 5, 6d, 8c, 9c, 10c, and 11e)	12,969.	14,651.
	12 Total revenue - add lines 8 through 11 (must equal Part VIII, column (A), line 12)	-30,309.	40,539.
Expenses	13 Grants and similar amounts paid (Part IX, column (A), lines 1-3)	1,347,594.	1,130,339.
	14 Benefits paid to or for members (Part IX, column (A), line 4)	0.	45,494.
	15 Salaries, other compensation, employee benefits (Part IX, column (A), lines 5-10)	0.	0.
	16a Professional fundraising fees (Part IX, column (A), line 11e)	355,495.	416,439.
	b Total fundraising expenses (Part IX, column (D), line 25) ▶	0.	0.
	17 Other expenses (Part IX, column (A), lines 11a-11d, 11f-24e)	586,703.	683,889.
	18 Total expenses. Add lines 13-17 (must equal Part IX, column (A), line 25)	942,198.	1,145,822.
19 Revenue less expenses. Subtract line 18 from line 12	405,396.	-15,483.	
Net Assets or Fund Balances	20 Total assets (Part X, line 16)	Beginning of Current Year	End of Year
	21 Total liabilities (Part X, line 26)	2,485,971.	2,561,628.
	22 Net assets or fund balances. Subtract line 21 from line 20	1,684.	92,824.
		2,484,287.	2,468,804.

**Part II Signature Block**

Under penalties of perjury, I declare that I have examined this return, including accompanying schedules and statements, and to the best of my knowledge and belief, it is true, correct, and complete. Declaration of preparer (other than officer) is based on all information of which preparer has any knowledge.

**Sign Here** ▶ Signature of officer *GARY R. WHITE* Date **3-10-15**

▶ **GARY R. WHITE, PRESIDENT/CEO**  
Type or print name and title

**Paid Preparer Use Only**

Print/Type preparer's name: *David R. Harn* Preparer's signature: *David R. Harn* Date: **2-27-15** Check if self-employed ☐ PTIN: **P00875654**

Firm's name: **HARROD & ASSOCIATES, PSC** Firm's EIN: **61-1291670**

Firm's address: **#2 HMB CIRCLE - SUITE A**  
**FRANKFORT, KY 40601** Phone no. **502-695-7300**

May the IRS discuss this return with the preparer shown above? (see instructions) ☒ Yes ☐ No

**Part III Statement of Program Service Accomplishments**Check if Schedule O contains a response or note to any line in this Part III ☐ ☒**1** Briefly describe the organization's mission:

The Kentucky Broadcasters Association (KBA) unites public and commercial radio and television stations across the state of Kentucky. The purpose of the KBA is to represent and further the interest of broadcasters, communicate relevant information to broadcasters through

**2** Did the organization undertake any significant program services during the year which were not listed on the prior Form 990 or 990-EZ? ☐ Yes ☒ No

If "Yes," describe these new services on Schedule O.

**3** Did the organization cease conducting, or make significant changes in how it conducts, any program services? ☐ Yes ☒ No

If "Yes," describe these changes on Schedule O.

**4** Describe the organization's program service accomplishments for each of its three largest program services, as measured by expenses. Section 501(c)(3) and 501(c)(4) organizations are required to report the amount of grants and allocations to others, the total expenses, and revenue, if any, for each program service reported.**4a** (Code: ) (Expenses \$ including grants of \$ ) (Revenue \$ )

KBA puts on an Annual Conference & Nab Conventions to bring together owners, managers, sales representatives and other station personnel for the purpose of updating and educating the membership on the latest technology, regulations, promotions and other broadcast industry related topics. Any association bylaws changes and /or elections requiring a vote of the membership are conducted during the conference.

**4b** (Code: ) (Expenses \$ including grants of \$ ) (Revenue \$ )

KBA provides seminars throughout the year to provide opportunities for continuing education for the various departments in broadcast stations. These areas include, Advertising Sales, Programming, Engineering and Legal/Regulatory matters. These seminars are essential to the associations mission of providing relevant information to its members.

**4c** (Code: ) (Expenses \$ including grants of \$ ) (Revenue \$ )

The broadcast industry is regulated by the Federal Government and the Federal Communications Commission. These agencies frequently attempt to impose legal or regulatory standards that may be supportive or sometimes detrimental to association members. At times, such action may be an added burden on broadcasters and may affect their ability to serve the public as mandated by the FCC. KBA has set up the Washington D.C. Leadership program to cover these expenses, which allows association representatives and its members the ability to convey their position(s) to legislators and regulators on matters affecting the industry.

**4d** Other program services (Describe in Schedule O.)

(Expenses \$ including grants of \$ ) (Revenue \$ )

**4e** Total program service expenses ►

**Part IV Checklist of Required Schedules**

	Yes	No
1 Is the organization described in section 501(c)(3) or 4947(a)(1) (other than a private foundation)? If "Yes," complete Schedule A .....		X
2 Is the organization required to complete Schedule B, Schedule of Contributors? .....		X
3 Did the organization engage in direct or indirect political campaign activities on behalf of or in opposition to candidates for public office? If "Yes," complete Schedule C, Part I .....		X
4 <b>Section 501(c)(3) organizations.</b> Did the organization engage in lobbying activities, or have a section 501(h) election in effect during the tax year? If "Yes," complete Schedule C, Part II .....		
5 Is the organization a section 501(c)(4), 501(c)(5), or 501(c)(6) organization that receives membership dues, assessments, or similar amounts as defined in Revenue Procedure 98-19? If "Yes," complete Schedule C, Part III .....	X	
6 Did the organization maintain any donor advised funds or any similar funds or accounts for which donors have the right to provide advice on the distribution or investment of amounts in such funds or accounts? If "Yes," complete Schedule D, Part I .....		X
7 Did the organization receive or hold a conservation easement, including easements to preserve open space, the environment, historic land areas, or historic structures? If "Yes," complete Schedule D, Part II .....		X
8 Did the organization maintain collections of works of art, historical treasures, or other similar assets? If "Yes," complete Schedule D, Part III .....		X
9 Did the organization report an amount in Part X, line 21, for escrow or custodial account liability; serve as a custodian for amounts not listed in Part X; or provide credit counseling, debt management, credit repair, or debt negotiation services? If "Yes," complete Schedule D, Part IV .....		X
10 Did the organization, directly or through a related organization, hold assets in temporarily restricted endowments, permanent endowments, or quasi-endowments? If "Yes," complete Schedule D, Part V .....		X
11 If the organization's answer to any of the following questions is "Yes," then complete Schedule D, Parts VI, VII, VIII, IX, or X as applicable.		
a Did the organization report an amount for land, buildings, and equipment in Part X, line 10? If "Yes," complete Schedule D, Part VI .....	X	
b Did the organization report an amount for investments - other securities in Part X, line 12 that is 5% or more of its total assets reported in Part X, line 16? If "Yes," complete Schedule D, Part VII .....		X
c Did the organization report an amount for investments - program related in Part X, line 13 that is 5% or more of its total assets reported in Part X, line 16? If "Yes," complete Schedule D, Part VIII .....		X
d Did the organization report an amount for other assets in Part X, line 15 that is 5% or more of its total assets reported in Part X, line 16? If "Yes," complete Schedule D, Part IX .....		X
e Did the organization report an amount for other liabilities in Part X, line 25? If "Yes," complete Schedule D, Part X .....		X
f Did the organization's separate or consolidated financial statements for the tax year include a footnote that addresses the organization's liability for uncertain tax positions under FIN 48 (ASC 740)? If "Yes," complete Schedule D, Part X .....	X	
12a Did the organization obtain separate, independent audited financial statements for the tax year? If "Yes," complete Schedule D, Parts XI and XII .....	X	
b Was the organization included in consolidated, independent audited financial statements for the tax year? If "Yes," and if the organization answered "No" to line 12a, then completing Schedule D, Parts XI and XII is optional .....	X	
13 Is the organization a school described in section 170(b)(1)(A)(ii)? If "Yes," complete Schedule E .....		X
14a Did the organization maintain an office, employees, or agents outside of the United States? .....		X
b Did the organization have aggregate revenues or expenses of more than \$10,000 from grantmaking, fundraising, business, investment, and program service activities outside the United States, or aggregate foreign investments valued at \$100,000 or more? If "Yes," complete Schedule F, Parts I and IV .....		X
15 Did the organization report on Part IX, column (A), line 3, more than \$5,000 of grants or other assistance to or for any foreign organization? If "Yes," complete Schedule F, Parts II and IV .....		X
16 Did the organization report on Part IX, column (A), line 3, more than \$5,000 of aggregate grants or other assistance to or for foreign individuals? If "Yes," complete Schedule F, Parts III and IV .....		X
17 Did the organization report a total of more than \$15,000 of expenses for professional fundraising services on Part IX, column (A), lines 6 and 11e? If "Yes," complete Schedule G, Part I .....		X
18 Did the organization report more than \$15,000 total of fundraising event gross income and contributions on Part VIII, lines 1c and 8a? If "Yes," complete Schedule G, Part II .....		X
19 Did the organization report more than \$15,000 of gross income from gaming activities on Part VIII, line 9a? If "Yes," complete Schedule G, Part III .....		X
20a Did the organization operate one or more hospital facilities? If "Yes," complete Schedule H .....		X
b If "Yes" to line 20a, did the organization attach a copy of its audited financial statements to this return? .....		

**Part IV Checklist of Required Schedules** (continued)

	Yes	No
<b>21</b> Did the organization report more than \$5,000 of grants or other assistance to any domestic organization or government on Part IX, column (A), line 1? <i>If "Yes," complete Schedule I, Parts I and II</i> .....		X
<b>22</b> Did the organization report more than \$5,000 of grants or other assistance to individuals in the United States on Part IX, column (A), line 2? <i>If "Yes," complete Schedule I, Parts I and III</i> .....	X	
<b>23</b> Did the organization answer "Yes" to Part VII, Section A, line 3, 4, or 5 about compensation of the organization's current and former officers, directors, trustees, key employees, and highest compensated employees? <i>If "Yes," complete Schedule J</i> .....	X	
<b>24a</b> Did the organization have a tax-exempt bond issue with an outstanding principal amount of more than \$100,000 as of the last day of the year, that was issued after December 31, 2002? <i>If "Yes," answer lines 24b through 24d and complete Schedule K. If "No," go to line 25a</i> .....		X
<b>b</b> Did the organization invest any proceeds of tax-exempt bonds beyond a temporary period exception? .....		
<b>c</b> Did the organization maintain an escrow account other than a refunding escrow at any time during the year to defease any tax-exempt bonds? .....		
<b>d</b> Did the organization act as an "on behalf of" issuer for bonds outstanding at any time during the year? .....		
<b>25a</b> <b>Section 501(c)(3) and 501(c)(4) organizations.</b> Did the organization engage in an excess benefit transaction with a disqualified person during the year? <i>If "Yes," complete Schedule L, Part I</i> .....		
<b>b</b> Is the organization aware that it engaged in an excess benefit transaction with a disqualified person in a prior year, and that the transaction has not been reported on any of the organization's prior Forms 990 or 990-EZ? <i>If "Yes," complete Schedule L, Part I</i> .....		
<b>26</b> Did the organization report any amount on Part X, line 5, 6, or 22 for receivables from or payables to any current or former officers, directors, trustees, key employees, highest compensated employees, or disqualified persons? <i>If so, complete Schedule L, Part II</i> .....		X
<b>27</b> Did the organization provide a grant or other assistance to an officer, director, trustee, key employee, substantial contributor or employee thereof, a grant selection committee member, or to a 35% controlled entity or family member of any of these persons? <i>If "Yes," complete Schedule L, Part III</i> .....		X
<b>28</b> Was the organization a party to a business transaction with one of the following parties (see Schedule L, Part IV instructions for applicable filing thresholds, conditions, and exceptions):		
<b>a</b> A current or former officer, director, trustee, or key employee? <i>If "Yes," complete Schedule L, Part IV</i> .....		X
<b>b</b> A family member of a current or former officer, director, trustee, or key employee? <i>If "Yes," complete Schedule L, Part IV</i> .....		X
<b>c</b> An entity of which a current or former officer, director, trustee, or key employee (or a family member thereof) was an officer, director, trustee, or direct or indirect owner? <i>If "Yes," complete Schedule L, Part IV</i> .....		X
<b>29</b> Did the organization receive more than \$25,000 in non-cash contributions? <i>If "Yes," complete Schedule M</i> .....		X
<b>30</b> Did the organization receive contributions of art, historical treasures, or other similar assets, or qualified conservation contributions? <i>If "Yes," complete Schedule M</i> .....		X
<b>31</b> Did the organization liquidate, terminate, or dissolve and cease operations? <i>If "Yes," complete Schedule N, Part I</i> .....		X
<b>32</b> Did the organization sell, exchange, dispose of, or transfer more than 25% of its net assets? <i>If "Yes," complete Schedule N, Part II</i> .....		X
<b>33</b> Did the organization own 100% of an entity disregarded as separate from the organization under Regulations sections 301.7701-2 and 301.7701-3? <i>If "Yes," complete Schedule R, Part I</i> .....		X
<b>34</b> Was the organization related to any tax-exempt or taxable entity? <i>If "Yes," complete Schedule R, Part II, III, or IV, and Part V, line 1</i> .....	X	
<b>35a</b> Did the organization have a controlled entity within the meaning of section 512(b)(13)? .....	X	
<b>b</b> If "Yes" to line 35a, did the organization receive any payment from or engage in any transaction with a controlled entity within the meaning of section 512(b)(13)? <i>If "Yes," complete Schedule R, Part V, line 2</i> .....		X
<b>36</b> <b>Section 501(c)(3) organizations.</b> Did the organization make any transfers to an exempt non-charitable related organization? <i>If "Yes," complete Schedule R, Part V, line 2</i> .....		
<b>37</b> Did the organization conduct more than 5% of its activities through an entity that is not a related organization and that is treated as a partnership for federal income tax purposes? <i>If "Yes," complete Schedule R, Part VI</i> .....		X
<b>38</b> Did the organization complete Schedule O and provide explanations in Schedule O for Part VI, lines 11b and 19? .....	X	

**Note.** All Form 990 filers are required to complete Schedule O .....

**Part V Statements Regarding Other IRS Filings and Tax Compliance**Check if Schedule O contains a response or note to any line in this Part V ☐

		Yes	No
1a	Enter the number reported in Box 3 of Form 1096. Enter -0- if not applicable		
1b	Enter the number of Forms W-2G included in line 1a. Enter -0- if not applicable		
c	Did the organization comply with backup withholding rules for reportable payments to vendors and reportable gaming (gambling) winnings to prize winners?	X	
2a	Enter the number of employees reported on Form W-3, Transmittal of Wage and Tax Statements, filed for the calendar year ending with or within the year covered by this return		
b	If at least one is reported on line 2a, did the organization file all required federal employment tax returns?	X	
<b>Note.</b> If the sum of lines 1a and 2a is greater than 250, you may be required to e-file (see instructions)			
3a	Did the organization have unrelated business gross income of \$1,000 or more during the year?		X
b	If "Yes," has it filed a Form 990-T for this year? If "No," to line 3b, provide an explanation in Schedule O		
4a	At any time during the calendar year, did the organization have an interest in, or a signature or other authority over, a financial account in a foreign country (such as a bank account, securities account, or other financial account)?		X
b	If "Yes," enter the name of the foreign country: See instructions for filing requirements for Form TD F 90-22.1, Report of Foreign Bank and Financial Accounts.		
5a	Was the organization a party to a prohibited tax shelter transaction at any time during the tax year?		X
b	Did any taxable party notify the organization that it was or is a party to a prohibited tax shelter transaction?		X
c	If "Yes," to line 5a or 5b, did the organization file Form 8886-T?		
6a	Does the organization have annual gross receipts that are normally greater than \$100,000, and did the organization solicit any contributions that were not tax deductible as charitable contributions?		X
b	If "Yes," did the organization include with every solicitation an express statement that such contributions or gifts were not tax deductible?		
<b>7 Organizations that may receive deductible contributions under section 170(c).</b>			
a	Did the organization receive a payment in excess of \$75 made partly as a contribution and partly for goods and services provided to the payor?		
b	If "Yes," did the organization notify the donor of the value of the goods or services provided?		
c	Did the organization sell, exchange, or otherwise dispose of tangible personal property for which it was required to file Form 8282?		
d	If "Yes," indicate the number of Forms 8282 filed during the year		
e	Did the organization receive any funds, directly or indirectly, to pay premiums on a personal benefit contract?		X
f	Did the organization, during the year, pay premiums, directly or indirectly, on a personal benefit contract?		X
g	If the organization received a contribution of qualified intellectual property, did the organization file Form 8899 as required?		X
h	If the organization received a contribution of cars, boats, airplanes, or other vehicles, did the organization file a Form 1098-C?		X
<b>8 Sponsoring organizations maintaining donor advised funds and section 509(a)(3) supporting organizations.</b> Did the supporting organization, or a donor advised fund maintained by a sponsoring organization, have excess business holdings at any time during the year?			
<b>9 Sponsoring organizations maintaining donor advised funds.</b>			
a	Did the organization make any taxable distributions under section 4966?		
b	Did the organization make a distribution to a donor, donor advisor, or related person?		
<b>10 Section 501(c)(7) organizations.</b> Enter:			
a	Initiation fees and capital contributions included on Part VIII, line 12		
b	Gross receipts, included on Form 990, Part VIII, line 12, for public use of club facilities		
<b>11 Section 501(c)(12) organizations.</b> Enter:			
a	Gross income from members or shareholders		
b	Gross income from other sources (Do not net amounts due or paid to other sources against amounts due or received from them.)		
<b>12a Section 4947(a)(1) non-exempt charitable trusts.</b> Is the organization filing Form 990 in lieu of Form 1041?			
b	If "Yes," enter the amount of tax-exempt interest received or accrued during the year		
<b>13 Section 501(c)(29) qualified nonprofit health insurance issuers.</b>			
a	Is the organization licensed to issue qualified health plans in more than one state?		
<b>Note.</b> See the instructions for additional information the organization must report on Schedule O.			
b	Enter the amount of reserves the organization is required to maintain by the states in which the organization is licensed to issue qualified health plans		
c	Enter the amount of reserves on hand		
14a	Did the organization receive any payments for indoor tanning services during the tax year?		X
b	If "Yes," has it filed a Form 720 to report these payments? If "No," provide an explanation in Schedule O		

**Part VI Governance, Management, and Disclosure** For each "Yes" response to lines 2 through 7b below, and for a "No" response to line 8a, 8b, or 10b below, describe the circumstances, processes, or changes in Schedule O. See instructions.

Check if Schedule O contains a response or note to any line in this Part VI

☒ X**Section A. Governing Body and Management**

	1a	1b	2	3	4	5	6	7a	7b	8a	8b	9	Yes	No
<b>1a</b> Enter the number of voting members of the governing body at the end of the tax year	19													
If there are material differences in voting rights among members of the governing body, or if the governing body delegated broad authority to an executive committee or similar committee, explain in Schedule O.														
<b>b</b> Enter the number of voting members included in line 1a, above, who are independent		19												
<b>2</b> Did any officer, director, trustee, or key employee have a family relationship or a business relationship with any other officer, director, trustee, or key employee?														X
<b>3</b> Did the organization delegate control over management duties customarily performed by or under the direct supervision of officers, directors, or trustees, or key employees to a management company or other person?														X
<b>4</b> Did the organization make any significant changes to its governing documents since the prior Form 990 was filed?														X
<b>5</b> Did the organization become aware during the year of a significant diversion of the organization's assets?														X
<b>6</b> Did the organization have members or stockholders?													X	
<b>7a</b> Did the organization have members, stockholders, or other persons who had the power to elect or appoint one or more members of the governing body?													X	
<b>b</b> Are any governance decisions of the organization reserved to (or subject to approval by) members, stockholders, or persons other than the governing body?													X	
<b>8</b> Did the organization contemporaneously document the meetings held or written actions undertaken during the year by the following:														
<b>a</b> The governing body?													X	
<b>b</b> Each committee with authority to act on behalf of the governing body?													X	
<b>9</b> Is there any officer, director, trustee, or key employee listed in Part VII, Section A, who cannot be reached at the organization's mailing address? If "Yes," provide the names and addresses in Schedule O														X

**Section B. Policies** (This Section B requests information about policies not required by the Internal Revenue Code.)

	10a	10b	11a	12a	12b	12c	13	14	15a	15b	16a	16b	Yes	No
<b>10a</b> Did the organization have local chapters, branches, or affiliates?														X
<b>b</b> If "Yes," did the organization have written policies and procedures governing the activities of such chapters, affiliates, and branches to ensure their operations are consistent with the organization's exempt purposes?														
<b>11a</b> Has the organization provided a complete copy of this Form 990 to all members of its governing body before filing the form?			X											
<b>b</b> Describe in Schedule O the process, if any, used by the organization to review this Form 990.														
<b>12a</b> Did the organization have a written conflict of interest policy? If "No," go to line 13				X										
<b>b</b> Were officers, directors, or trustees, and key employees required to disclose annually interests that could give rise to conflicts?					X									
<b>c</b> Did the organization regularly and consistently monitor and enforce compliance with the policy? If "Yes," describe in Schedule O how this was done						X								
<b>13</b> Did the organization have a written whistleblower policy?							X							
<b>14</b> Did the organization have a written document retention and destruction policy?								X						
<b>15</b> Did the process for determining compensation of the following persons include a review and approval by independent persons, comparability data, and contemporaneous substantiation of the deliberation and decision?														
<b>a</b> The organization's CEO, Executive Director, or top management official									X					
<b>b</b> Other officers or key employees of the organization										X				
If "Yes" to line 15a or 15b, describe the process in Schedule O (see instructions).														
<b>16a</b> Did the organization invest in, contribute assets to, or participate in a joint venture or similar arrangement with a taxable entity during the year?														X
<b>b</b> If "Yes," did the organization follow a written policy or procedure requiring the organization to evaluate its participation in joint venture arrangements under applicable federal tax law, and take steps to safeguard the organization's exempt status with respect to such arrangements?														

**Section C. Disclosure**

**17** List the states with which a copy of this Form 990 is required to be filed **► KY**

**18** Section 6104 requires an organization to make its Forms 1023 (or 1024 if applicable), 990, and 990-T (Section 501(c)(3)s only) available for public inspection. Indicate how you made these available. Check all that apply.  
☐ Own website ☐ Another's website ☒ Upon request ☐ Other (explain in Schedule O)

**19** Describe in Schedule O whether (and if so, how), the organization made its governing documents, conflict of interest policy, and financial statements available to the public during the tax year.

**20** State the name, physical address, and telephone number of the person who possesses the books and records of the organization: **►**  
**OFFICE - 502-848-0426**  
**101 ENTERPRISE DRIVE, FRANKFORT, KY 40601**

Check if Schedule O contains a response or note to any line in this Part VII

☐ Check this box if neither the organization nor any related organization compensated any current officer, director, or trustee.

Form **990** (2013)





## Officers &amp; Directors



Rick McCue, Chairman

WBKO-TV  
2727 Russellville Road  
Bowling Green KY 42101

[rick.mccue@wbko.com](mailto:rick.mccue@wbko.com)

Phone: 270-781-1313  
Fax: 270-781-1507



Chris Winkle, Chairman-Elect

WCYN AM/FM  
117 North Main Street, Suite 3  
Cynthiana KY 41031

[chris.winkle@wcyn.com](mailto:chris.winkle@wcyn.com)

Phone: 859-234-1400  
Fax: 859-234-1425



Bill Lamb, Past Chairman

WDRB-TV WMYO-TV  
624 W Muhammad Ali Blvd  
Louisville KY 40203

[billlamb@wdrb.com](mailto:billlamb@wdrb.com)

Phone: 502-584-6441  
Fax: 502-589-5559

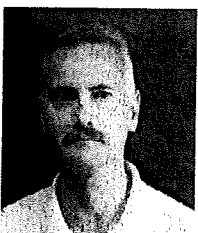


Jim Moore, Radio Director, District 1

WYMC-Radio  
P O Box V  
Mayfield KY 42066

[wymc@hotmail.com](mailto:wymc@hotmail.com)

Phone: 270-247-1430  
Fax:



Bob Kelley, Radio Director, District 2

WFMW-AM WKTG-FM  
P O Box 338  
Madisonville KY 42431

[bob@wktg.com](mailto:bob@wktg.com)

Phone: 270-821-4096  
Fax: 270-821-5954

Bill Gentry, Radio Director, District 3

Clear Channel, Louisville  
4000 #1 Radio Drive  
Louisville KY 40218

[billgentry@clearchannel.com](mailto:billgentry@clearchannel.com)

Phone: 502-479-2121  
Fax:



Derron Steenbergen, Radio Director,  
District 4

[dsteenbergen@commonwealthbroadcasting.com](mailto:dsteenbergen@commonwealthbroadcasting.com)

Phone: 270-651-6050

Fax:

Commonwealth Broadcasting Company  
P O Box 457  
Glasgow KY 42142



Kristin Cantrell, Radio Director, District 5

[kristin.cantrell@gmail.com](mailto:kristin.cantrell@gmail.com)

Phone: 502-875-1130

Fax: 502-875-1225

CapCity Radio  
115 West Main Street  
Frankfort KY 40601



Bridgett Gambrel, Radio Director, District 6

[brgambrel@forchtbroadcasting.com](mailto:brgambrel@forchtbroadcasting.com)

Phone: 606-864-2148

Fax: 606-864-0645

Forcht Broadcasting, London  
P O Box 1988  
London KY 40741



Jeff Ray, Radio Director, District 7

[jeff@gatewayradio.net](mailto:jeff@gatewayradio.net)

Phone: 859-674-2266

Fax:

Gateway Radio Works  
P O Box 1010  
Owingsville KY 40360



Adam Gearheart, Radio Director, District 8

[adam@gearheart.com](mailto:adam@gearheart.com)

Phone: 606-479-6237

Fax:

Gearheart Media  
98 Church Road  
P O Box 1094  
Harold KY 41635

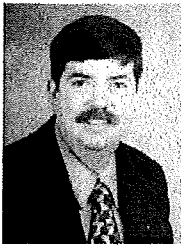
Paul Hitchcock, Public Radio Director

[p.hitchc@moreheadstate.edu](mailto:p.hitchc@moreheadstate.edu)

Phone: 606-783-2334

Fox: 606-783-2335

WMKY-FM, Morehead State University  
Morehead State Public Radio  
150 University Boulevard  
132 Breckinridge Hall  
Morehead State University Morehead, KY. 40351



Marti Hazel, Television Director, Louisville

[mhazel@wdrb.com](mailto:mhazel@wdrb.com)

WDRB-TV WMYO-TV  
624 W Muhammad Ali Blvd  
Louisville KY 40203

Phone: 502-584-6441  
Fax: 502-589-5559



Ronna Corrente, Television Director, Lexington

[rcorrente@sbgstv.com](mailto:rcorrente@sbgstv.com)

WDKY-TV  
836 Euclid Ave  
Lexington KY 40502

Phone: 859-967-1622  
Fax:



Nick Ulmer, Television Director, Other Markets

[nulmer@14news.com](mailto:nulmer@14news.com)

WFIE-TV  
P O Box 1414  
Evansville IN 47701

Phone: 812-433-3440  
Fax:



David Brinkley, Public Television Director  
Western KY University  
1906 College Heights Blvd  
Bowling Green KY 4210-1034

[david.brinkley@wku.edu](mailto:david.brinkley@wku.edu)

Phone: 270-745-2400  
Fax:



Nathan Butler, Associate Member Director

[nathanbutler@clearchannel.com](mailto:nathanbutler@clearchannel.com)

KNN, KY News Network  
4000 #1 Radio Drive  
Louisville KY 40218

Phone: 502-479-2248  
Fax:



Keith Casebolt, At-Large Director

[keithc@caseboltbroadcasting.com](mailto:keithc@caseboltbroadcasting.com)

Casebolt Broadcasting & Marketing

Phone: 606-789-6664  
Fax: 606-789-6669



P O Box 487  
Shelbiana KY 41562



Tom Ulmer, At -Large Director

Alpha Media, Louisville  
520 South 4th Ave., 2nd Floor  
Louisville KY 40202-2577

[tom.ulmer@alphamediausa.com](mailto:tom.ulmer@alphamediausa.com)

Phone: 502-625-1288  
Fax: 502-625-1255



Dawn Sciarrino, Legal Counsel

Sciarrino & Shubert, PLLC  
5425 Tree Line Drive  
Centreville VA 20120

[dawn@sciarrinolaw.com](mailto:dawn@sciarrinolaw.com)

Phone: 202-350-9658  
Fax: 703-991-7120



Gary R White, President/CEO

Kentucky Broadcasters Association  
101 Enterprise Drive  
Frankfort KY 40601

[gary@kba.org](mailto:gary@kba.org)

Phone: 502-682-6896 Direct Line  
Fax: 502-848-5710



[KBA Radio District Map](#)

**Part VIII Statement of Revenue**Check if Schedule O contains a response or note to any line in this Part VIII ☐

				(A) Total revenue	(B) Related or exempt function revenue	(C) Unrelated business revenue	(D) Revenue excluded from tax under sections 512-514
<b>Contributions, Gifts, Grants and Other Similar Amounts</b>	1 a Federated campaigns	1a					
	b Membership dues	1b	10,728.				
	c Fundraising events	1c					
	d Related organizations	1d					
	e Government grants (contributions)	1e					
	f All other contributions, gifts, grants, and similar amounts not included above	1f	100.				
	g Noncash contributions included in lines 1a-1f: \$						
	h Total. Add lines 1a-1f			10,828.			
<b>Program Service Revenue</b>	2 a PUBLIC EDUCATION PARTN	Business Code	515100	1,058,900.	1,058,900.		
	b ANNUAL CONFERENCE		515100	5,200.	5,200.		
	c COMMISSIONS		515100	221.	221.		
	d						
	e						
	f All other program service revenue						
	g Total. Add lines 2a-2f			1,064,321.			
	<b>Other Revenue</b>	3 Investment income (including dividends, interest, and other similar amounts)			14,651.	14,651.	
4 Income from investment of tax-exempt bond proceeds							
5 Royalties							
6 a Gross rents		(i) Real	(ii) Personal				
b Less: rental expenses							
c Rental income or (loss)							
d Net rental income or (loss)				76,621.			76,621.
7 a Gross amount from sales of assets other than inventory		(i) Securities	(ii) Other				
b Less: cost or other basis and sales expenses							
c Gain or (loss)							
d Net gain or (loss)							
8 a Gross income from fundraising events (not including \$ _____ of contributions reported on line 1c). See Part IV, line 18		a					
b Less: direct expenses		b					
c Net income or (loss) from fundraising events							
9 a Gross income from gaming activities. See Part IV, line 19		a					
b Less: direct expenses		b					
c Net income or (loss) from gaming activities							
10 a Gross sales of inventory, less returns and allowances		a					
b Less: cost of goods sold		b					
c Net income or (loss) from sales of inventory							
Miscellaneous Revenue			Business Code				
11 a EARNINGS EQUITY INVEST		515100	-36,082.	-36,082.			
b							
c							
d All other revenue							
e Total. Add lines 11a-11d			-36,082.				
12 Total revenue. See instructions.			1,130,339.	1,042,890.	0.	76,621.	

**Part IX Statement of Functional Expenses**

Section 501(c)(3) and 501(c)(4) organizations must complete all columns. All other organizations must complete column (A).

Check if Schedule O contains a response or note to any line in this Part IX

☒ X

Do not include amounts reported on lines 6b, 7b, 8b, 9b, and 10b of Part VIII.	(A) Total expenses	(B) Program service expenses	(C) Management and general expenses	(D) Fundraising expenses
1 Grants and other assistance to governments and organizations in the United States. See Part IV, line 21				
2 Grants and other assistance to individuals in the United States. See Part IV, line 22	45,494.			
3 Grants and other assistance to governments, organizations, and individuals outside the United States. See Part IV, lines 15 and 16				
4 Benefits paid to or for members				
5 Compensation of current officers, directors, trustees, and key employees	229,515.			
6 Compensation not included above, to disqualified persons (as defined under section 4958(f)(1)) and persons described in section 4958(c)(3)(B)				
7 Other salaries and wages	105,032.			
8 Pension plan accruals and contributions (include section 401(k) and 403(b) employer contributions)	49,557.			
9 Other employee benefits	13,241.			
10 Payroll taxes	19,094.			
11 Fees for services (non-employees):				
a Management				
b Legal	26,770.			
c Accounting	15,592.			
d Lobbying				
e Professional fundraising services. See Part IV, line 17				
f Investment management fees				
g Other. (If line 11g amount exceeds 10% of line 25, column (A) amount, list line 11g expenses on Sch O.)				
12 Advertising and promotion	1,357.			
13 Office expenses	13,389.			
14 Information technology				
15 Royalties				
16 Occupancy				
17 Travel	17,566.			
18 Payments of travel or entertainment expenses for any federal, state, or local public officials				
19 Conferences, conventions, and meetings	242,667.			
20 Interest				
21 Payments to affiliates				
22 Depreciation, depletion, and amortization	40,524.			
23 Insurance	11,933.			
24 Other expenses. Itemize expenses not covered above. (List miscellaneous expenses in line 24e. If line 24e amount exceeds 10% of line 25, column (A) amount, list line 24e expenses on Schedule O.)				
a OTHER MEMBER SERVICE EX	101,641.			
b CONTRIBUTIONS	85,274.			
c LEGISLATIVE EXPENSES	30,375.			
d REPAIRS & MAINT.	23,310.			
e All other expenses See Sch O	73,491.			
25 Total functional expenses. Add lines 1 through 24e	1,145,822.			
26 Joint costs. Complete this line only if the organization reported in column (B) joint costs from a combined educational campaign and fundraising solicitation.				

Check here ☐ if following SOP 98-2 (ASC 958-720)

**Part X Balance Sheet**Check if Schedule O contains a response or note to any line in this Part X ☐

		(A) Beginning of year		(B) End of year
<b>Assets</b>	1 Cash - non-interest-bearing .....	643,453.	1	691,588.
	2 Savings and temporary cash investments .....	942,410.	2	956,208.
	3 Pledges and grants receivable, net .....		3	
	4 Accounts receivable, net .....		4	
	5 Loans and other receivables from current and former officers, directors, trustees, key employees, and highest compensated employees. Complete Part II of Schedule L .....		5	
	6 Loans and other receivables from other disqualified persons (as defined under section 4958(f)(1)), persons described in section 4958(c)(3)(B), and contributing employers and sponsoring organizations of section 501(c)(9) voluntary employees' beneficiary organizations (see instr). Complete Part II of Sch L .....		6	
	7 Notes and loans receivable, net .....	175,000.	7	230,000.
	8 Inventories for sale or use .....		8	
	9 Prepaid expenses and deferred charges .....		9	
	10a Land, buildings, and equipment: cost or other basis. Complete Part VI of Schedule D .....	10a 1,335,511.		
	b Less: accumulated depreciation .....	10b 494,992.	10c 849,893.	840,519.
	11 Investments - publicly traded securities .....		11	
	12 Investments - other securities. See Part IV, line 11 .....	37,329.	12	37,329.
	13 Investments - program-related. See Part IV, line 11 .....		13	
	14 Intangible assets .....		14	
	15 Other assets. See Part IV, line 11 .....	-162,114.	15	-194,016.
16 <b>Total assets.</b> Add lines 1 through 15 (must equal line 34) .....	2,485,971.	16	2,561,628.	
<b>Liabilities</b>	17 Accounts payable and accrued expenses .....	1,684.	17	92,824.
	18 Grants payable .....		18	
	19 Deferred revenue .....		19	
	20 Tax-exempt bond liabilities .....		20	
	21 Escrow or custodial account liability. Complete Part IV of Schedule D .....		21	
	22 Loans and other payables to current and former officers, directors, trustees, key employees, highest compensated employees, and disqualified persons. Complete Part II of Schedule L .....		22	
	23 Secured mortgages and notes payable to unrelated third parties .....		23	
	24 Unsecured notes and loans payable to unrelated third parties .....		24	
	25 Other liabilities (including federal income tax, payables to related third parties, and other liabilities not included on lines 17-24). Complete Part X of Schedule D .....		25	
	26 <b>Total liabilities.</b> Add lines 17 through 25 .....	1,684.	26	92,824.
<b>Net Assets or Fund Balances</b>	<b>Organizations that follow SFAS 117 (ASC 958), check here <input checked="" type="checkbox"/> and complete lines 27 through 29, and lines 33 and 34.</b>			
	27 Unrestricted net assets .....	2,484,287.	27	2,468,804.
	28 Temporarily restricted net assets .....		28	
	29 Permanently restricted net assets .....		29	
	<b>Organizations that do not follow SFAS 117 (ASC 958), check here <input type="checkbox"/> and complete lines 30 through 34.</b>			
	30 Capital stock or trust principal, or current funds .....		30	
	31 Paid-in or capital surplus, or land, building, or equipment fund .....		31	
	32 Retained earnings, endowment, accumulated income, or other funds .....		32	
33 <b>Total net assets or fund balances</b> .....	2,484,287.	33	2,468,804.	
34 <b>Total liabilities and net assets/fund balances</b> .....	2,485,971.	34	2,561,628.	

Form 990 (2013)

**Part XI Reconciliation of Net Assets**Check if Schedule O contains a response or note to any line in this Part XI ☐

1	Total revenue (must equal Part VIII, column (A), line 12)	1	1,130,339.
2	Total expenses (must equal Part IX, column (A), line 25)	2	1,145,822.
3	Revenue less expenses. Subtract line 2 from line 1	3	-15,483.
4	Net assets or fund balances at beginning of year (must equal Part X, line 33, column (A))	4	2,484,287.
5	Net unrealized gains (losses) on investments	5	
6	Donated services and use of facilities	6	
7	Investment expenses	7	
8	Prior period adjustments	8	
9	Other changes in net assets or fund balances (explain in Schedule O)	9	0.
10	Net assets or fund balances at end of year. Combine lines 3 through 9 (must equal Part X, line 33, column (B))	10	2,468,804.

**Part XII Financial Statements and Reporting**Check if Schedule O contains a response or note to any line in this Part XII ☒

		Yes	No
1	Accounting method used to prepare the Form 990: <input checked="" type="checkbox"/> Cash <input type="checkbox"/> Accrual <input type="checkbox"/> Other _____ If the organization changed its method of accounting from a prior year or checked "Other," explain in Schedule O.		
2a	Were the organization's financial statements compiled or reviewed by an independent accountant? _____ If "Yes," check a box below to indicate whether the financial statements for the year were compiled or reviewed on a separate basis, consolidated basis, or both: <input type="checkbox"/> Separate basis <input type="checkbox"/> Consolidated basis <input type="checkbox"/> Both consolidated and separate basis		X
2b	Were the organization's financial statements audited by an independent accountant? _____ If "Yes," check a box below to indicate whether the financial statements for the year were audited on a separate basis, consolidated basis, or both: <input type="checkbox"/> Separate basis <input checked="" type="checkbox"/> Consolidated basis <input type="checkbox"/> Both consolidated and separate basis	X	
2c	If "Yes" to line 2a or 2b, does the organization have a committee that assumes responsibility for oversight of the audit, review, or compilation of its financial statements and selection of an independent accountant? _____ If the organization changed either its oversight process or selection process during the tax year, explain in Schedule O.	X	
3a	As a result of a federal award, was the organization required to undergo an audit or audits as set forth in the Single Audit Act and OMB Circular A-133? _____		X
3b	If "Yes," did the organization undergo the required audit or audits? If the organization did not undergo the required audit or audits, explain why in Schedule O and describe any steps taken to undergo such audits _____		

Form 990 (2013)



**SCHEDULE C**  
**(Form 990 or 990-EZ)**

Department of the Treasury  
Internal Revenue Service

**Political Campaign and Lobbying Activities**

For Organizations Exempt From Income Tax Under section 501(c) and section 527

- ▶ **Complete if the organization is described below.** ▶ **Attach to Form 990 or Form 990-EZ.**  
▶ **See separate instructions.** ▶ **Information about Schedule C (Form 990 or 990-EZ) and its instructions is at [www.irs.gov/form990](http://www.irs.gov/form990).**

OMB No. 1545-0047

**2013**

Open to Public  
Inspection

If the organization answered "Yes," to Form 990, Part IV, line 3, or Form 990-EZ, Part V, line 46 (Political Campaign Activities), then

- Section 501(c)(3) organizations: Complete Parts I-A and B. Do not complete Part I-C.
- Section 501(c) (other than section 501(c)(3)) organizations: Complete Parts I-A and C below. Do not complete Part I-B.
- Section 527 organizations: Complete Part I-A only.

If the organization answered "Yes," to Form 990, Part IV, line 4, or Form 990-EZ, Part VI, line 47 (Lobbying Activities), then

- Section 501(c)(3) organizations that have filed Form 5768 (election under section 501(h)): Complete Part II-A. Do not complete Part II-B.
- Section 501(c)(3) organizations that have NOT filed Form 5768 (election under section 501(h)): Complete Part II-B. Do not complete Part II-A.

If the organization answered "Yes," to Form 990, Part IV, line 5 (Proxy Tax) or Form 990-EZ, Part V, line 35c (Proxy Tax), then

- Section 501(c)(4), (5), or (6) organizations: Complete Part III.

Name of organization

**KENTUCKY BROADCASTERS ASSOCIATION, INC.**

Employer identification number

**61-0663764**

**Part I-A Complete if the organization is exempt under section 501(c) or is a section 527 organization.**

1 Provide a description of the organization's direct and indirect political campaign activities in Part IV.

2 Political expenditures ..... ▶ \$ \_\_\_\_\_

3 Volunteer hours ..... ▶ \_\_\_\_\_

**Part I-B Complete if the organization is exempt under section 501(c)(3).**

1 Enter the amount of any excise tax incurred by the organization under section 4955 ..... ▶ \$ \_\_\_\_\_

2 Enter the amount of any excise tax incurred by organization managers under section 4955 ..... ▶ \$ \_\_\_\_\_

3 If the organization incurred a section 4955 tax, did it file Form 4720 for this year? ..... ☐ Yes ☐ No

4a Was a correction made? ..... ☐ Yes ☐ No

b If "Yes," describe in Part IV.

**Part I-C Complete if the organization is exempt under section 501(c), except section 501(c)(3).**

1 Enter the amount directly expended by the filing organization for section 527 exempt function activities ..... ▶ \$ \_\_\_\_\_

2 Enter the amount of the filing organization's funds contributed to other organizations for section 527  
exempt function activities ..... ▶ \$ \_\_\_\_\_

3 Total exempt function expenditures. Add lines 1 and 2. Enter here and on Form 1120-POL,  
line 17b ..... ▶ \$ \_\_\_\_\_

4 Did the filing organization file Form 1120-POL for this year? ..... ☐ Yes ☐ No

5 Enter the names, addresses and employer identification number (EIN) of all section 527 political organizations to which the filing organization made payments. For each organization listed, enter the amount paid from the filing organization's funds. Also enter the amount of political contributions received that were promptly and directly delivered to a separate political organization, such as a separate segregated fund or a political action committee (PAC). If additional space is needed, provide information in Part IV.

(a) Name	(b) Address	(c) EIN	(d) Amount paid from filing organization's funds. If none, enter -0-	(e) Amount of political contributions received and promptly and directly delivered to a separate political organization. If none, enter -0-

For Paperwork Reduction Act Notice, see the Instructions for Form 990 or 990-EZ.

Schedule C (Form 990 or 990-EZ) 2013

LHA

**Part II-A** Complete if the organization is exempt under section 501(c)(3) and filed Form 5768 (election under section 501(h)).

A Check ☐ if the filing organization belongs to an affiliated group (and list in Part IV each affiliated group member's name, address, EIN, expenses, and share of excess lobbying expenditures).

B Check ☐ if the filing organization checked box A and "limited control" provisions apply.

Limits on Lobbying Expenditures (The term "expenditures" means amounts paid or incurred.)		(a) Filing organization's totals	(b) Affiliated group totals												
1a Total lobbying expenditures to influence public opinion (grass roots lobbying) .....															
b Total lobbying expenditures to influence a legislative body (direct lobbying) .....															
c Total lobbying expenditures (add lines 1a and 1b) .....															
d Other exempt purpose expenditures .....															
e Total exempt purpose expenditures (add lines 1c and 1d) .....															
f Lobbying nontaxable amount. Enter the amount from the following table in both columns.															
<table border="1"> <thead> <tr> <th>If the amount on line 1e, column (a) or (b) is:</th> <th>The lobbying nontaxable amount is:</th> </tr> </thead> <tbody> <tr> <td>Not over \$500,000</td> <td>20% of the amount on line 1e.</td> </tr> <tr> <td>Over \$500,000 but not over \$1,000,000</td> <td>\$100,000 plus 15% of the excess over \$500,000.</td> </tr> <tr> <td>Over \$1,000,000 but not over \$1,500,000</td> <td>\$175,000 plus 10% of the excess over \$1,000,000.</td> </tr> <tr> <td>Over \$1,500,000 but not over \$17,000,000</td> <td>\$225,000 plus 5% of the excess over \$1,500,000.</td> </tr> <tr> <td>Over \$17,000,000</td> <td>\$1,000,000.</td> </tr> </tbody> </table>		If the amount on line 1e, column (a) or (b) is:	The lobbying nontaxable amount is:	Not over \$500,000	20% of the amount on line 1e.	Over \$500,000 but not over \$1,000,000	\$100,000 plus 15% of the excess over \$500,000.	Over \$1,000,000 but not over \$1,500,000	\$175,000 plus 10% of the excess over \$1,000,000.	Over \$1,500,000 but not over \$17,000,000	\$225,000 plus 5% of the excess over \$1,500,000.	Over \$17,000,000	\$1,000,000.		
If the amount on line 1e, column (a) or (b) is:	The lobbying nontaxable amount is:														
Not over \$500,000	20% of the amount on line 1e.														
Over \$500,000 but not over \$1,000,000	\$100,000 plus 15% of the excess over \$500,000.														
Over \$1,000,000 but not over \$1,500,000	\$175,000 plus 10% of the excess over \$1,000,000.														
Over \$1,500,000 but not over \$17,000,000	\$225,000 plus 5% of the excess over \$1,500,000.														
Over \$17,000,000	\$1,000,000.														
g Grassroots nontaxable amount (enter 25% of line 1f) .....															
h Subtract line 1g from line 1a. If zero or less, enter -0- .....															
i Subtract line 1f from line 1c. If zero or less, enter -0- .....															
j If there is an amount other than zero on either line 1h or line 1i, did the organization file Form 4720 reporting section 4911 tax for this year? .....															

☐ Yes ☐ No

**4-Year Averaging Period Under Section 501(h)**

(Some organizations that made a section 501(h) election do not have to complete all of the five columns below. See the instructions for lines 2a through 2f on page 4.)

**Lobbying Expenditures During 4-Year Averaging Period**

Calendar year (or fiscal year beginning in)	(a) 2010	(b) 2011	(c) 2012	(d) 2013	(e) Total
<b>2a</b> Lobbying nontaxable amount					
<b>b</b> Lobbying ceiling amount (150% of line 2a, column(e))					
<b>c</b> Total lobbying expenditures					
<b>d</b> Grassroots nontaxable amount					
<b>e</b> Grassroots ceiling amount (150% of line 2d, column (e))					
<b>f</b> Grassroots lobbying expenditures					

Schedule C (Form 990 or 990-EZ) 2013

**Part II-B** Complete if the organization is exempt under section 501(c)(3) and has NOT filed Form 5768 (election under section 501(h)).

For each "Yes," response to lines 1a through 1i below, provide in Part IV a detailed description of the lobbying activity.

	(a)		(b)
	Yes	No	Amount
<b>1</b> During the year, did the filing organization attempt to influence foreign, national, state or local legislation, including any attempt to influence public opinion on a legislative matter or referendum, through the use of:			
<b>a</b> Volunteers? .....			
<b>b</b> Paid staff or management (include compensation in expenses reported on lines 1c through 1i)? ..			
<b>c</b> Media advertisements? .....			
<b>d</b> Mailings to members, legislators, or the public? .....			
<b>e</b> Publications, or published or broadcast statements? .....			
<b>f</b> Grants to other organizations for lobbying purposes? .....			
<b>g</b> Direct contact with legislators, their staffs, government officials, or a legislative body? .....			
<b>h</b> Rallies, demonstrations, seminars, conventions, speeches, lectures, or any similar means? .....			
<b>i</b> Other activities? .....			
<b>j</b> Total. Add lines 1c through 1i .....			
<b>2a</b> Did the activities in line 1 cause the organization to be not described in section 501(c)(3)? .....			
<b>b</b> If "Yes," enter the amount of any tax incurred under section 4912 .....			
<b>c</b> If "Yes," enter the amount of any tax incurred by organization managers under section 4912 .....			
<b>d</b> If the filing organization incurred a section 4912 tax, did it file Form 4720 for this year? .....			

**Part III-A** Complete if the organization is exempt under section 501(c)(4), section 501(c)(5), or section 501(c)(6).

	Yes	No
<b>1</b> Were substantially all (90% or more) dues received nondeductible by members? .....	<b>1</b> X	
<b>2</b> Did the organization make only in-house lobbying expenditures of \$2,000 or less? .....	<b>2</b>	X
<b>3</b> Did the organization agree to carry over lobbying and political expenditures from the prior year? .....	<b>3</b>	X

**Part III-B** Complete if the organization is exempt under section 501(c)(4), section 501(c)(5), or section 501(c)(6) and if either (a) BOTH Part III-A, lines 1 and 2, are answered "No," OR (b) Part III-A, line 3, is answered "Yes."

<b>1</b> Dues, assessments and similar amounts from members .....	<b>1</b>	
<b>2</b> Section 162(e) nondeductible lobbying and political expenditures (do not include amounts of political expenses for which the section 527(f) tax was paid).		
<b>a</b> Current year .....	<b>2a</b>	
<b>b</b> Carryover from last year .....	<b>2b</b>	
<b>c</b> Total .....	<b>2c</b>	
<b>3</b> Aggregate amount reported in section 6033(e)(1)(A) notices of nondeductible section 162(e) dues .....	<b>3</b>	
<b>4</b> If notices were sent and the amount on line 2c exceeds the amount on line 3, what portion of the excess does the organization agree to carryover to the reasonable estimate of nondeductible lobbying and political expenditure next year? .....	<b>4</b>	
<b>5</b> Taxable amount of lobbying and political expenditures (see instructions) .....	<b>5</b>	

**Part IV** Supplemental Information

Provide the descriptions required for Part I-A, line 1; Part I-B, line 4; Part I-C, line 5; Part II-A (affiliated group list); Part II-A, line 2; and Part II-B, line 1. Also, complete this part for any additional information.

**SCHEDULE D**  
(Form 990)

Department of the Treasury  
Internal Revenue Service

**Supplemental Financial Statements**

▶ Complete if the organization answered "Yes," to Form 990, Part IV, line 6, 7, 8, 9, 10, 11a, 11b, 11c, 11d, 11e, 11f, 12a, or 12b.  
▶ Attach to Form 990.

▶ Information about Schedule D (Form 990) and its instructions is at [www.irs.gov/form990](http://www.irs.gov/form990).

OMB No. 1545-0047

**2013**

Open to Public  
Inspection

Name of the organization

**KENTUCKY BROADCASTERS ASSOCIATION, INC.**

Employer identification number

**61-0663764**

**Part I Organizations Maintaining Donor Advised Funds or Other Similar Funds or Accounts.** Complete if the organization answered "Yes" to Form 990, Part IV, line 6.

	(a) Donor advised funds	(b) Funds and other accounts
1 Total number at end of year .....		
2 Aggregate contributions to (during year) .....		
3 Aggregate grants from (during year) .....		
4 Aggregate value at end of year .....		
5 Did the organization inform all donors and donor advisors in writing that the assets held in donor advised funds are the organization's property, subject to the organization's exclusive legal control? <input type="checkbox"/> Yes <input type="checkbox"/> No		
6 Did the organization inform all grantees, donors, and donor advisors in writing that grant funds can be used only for charitable purposes and not for the benefit of the donor or donor advisor, or for any other purpose conferring impermissible private benefit? <input type="checkbox"/> Yes <input type="checkbox"/> No		

**Part II Conservation Easements.** Complete if the organization answered "Yes" to Form 990, Part IV, line 7.

1 Purpose(s) of conservation easements held by the organization (check all that apply).  
☐ Preservation of land for public use (e.g., recreation or education) ☐ Preservation of an historically important land area  
☐ Protection of natural habitat ☐ Preservation of a certified historic structure  
☐ Preservation of open space

2 Complete lines 2a through 2d if the organization held a qualified conservation contribution in the form of a conservation easement on the last day of the tax year.

	Held at the End of the Tax Year
a Total number of conservation easements .....	2a
b Total acreage restricted by conservation easements .....	2b
c Number of conservation easements on a certified historic structure included in (a) .....	2c
d Number of conservation easements included in (c) acquired after 8/17/06, and not on a historic structure listed in the National Register .....	2d

3 Number of conservation easements modified, transferred, released, extinguished, or terminated by the organization during the tax year ▶ .....

4 Number of states where property subject to conservation easement is located ▶ .....

5 Does the organization have a written policy regarding the periodic monitoring, inspection, handling of violations, and enforcement of the conservation easements it holds? ☐ Yes ☐ No

6 Staff and volunteer hours devoted to monitoring, inspecting, and enforcing conservation easements during the year ▶ .....

7 Amount of expenses incurred in monitoring, inspecting, and enforcing conservation easements during the year ▶ \$ .....

8 Does each conservation easement reported on line 2(d) above satisfy the requirements of section 170(h)(4)(B)(i) and section 170(h)(4)(B)(ii)? ☐ Yes ☐ No

9 In Part XIII, describe how the organization reports conservation easements in its revenue and expense statement, and balance sheet, and include, if applicable, the text of the footnote to the organization's financial statements that describes the organization's accounting for conservation easements.

**Part III Organizations Maintaining Collections of Art, Historical Treasures, or Other Similar Assets.**

Complete if the organization answered "Yes" to Form 990, Part IV, line 8.

1a If the organization elected, as permitted under SFAS 116 (ASC 958), not to report in its revenue statement and balance sheet works of art, historical treasures, or other similar assets held for public exhibition, education, or research in furtherance of public service, provide, in Part XIII, the text of the footnote to its financial statements that describes these items.

b If the organization elected, as permitted under SFAS 116 (ASC 958), to report in its revenue statement and balance sheet works of art, historical treasures, or other similar assets held for public exhibition, education, or research in furtherance of public service, provide the following amounts relating to these items:

(i) Revenues included in Form 990, Part VIII, line 1 ▶ \$ .....

(ii) Assets included in Form 990, Part X ▶ \$ .....

2 If the organization received or held works of art, historical treasures, or other similar assets for financial gain, provide the following amounts required to be reported under SFAS 116 (ASC 958) relating to these items:

a Revenues included in Form 990, Part VIII, line 1 ▶ \$ .....

b Assets included in Form 990, Part X ▶ \$ .....

**Part III Organizations Maintaining Collections of Art, Historical Treasures, or Other Similar Assets** (continued)

3 Using the organization's acquisition, accession, and other records, check any of the following that are a significant use of its collection items (check all that apply):

- a ☐ Public exhibition d ☐ Loan or exchange programs  
 b ☐ Scholarly research e ☐ Other \_\_\_\_\_  
 c ☐ Preservation for future generations

4 Provide a description of the organization's collections and explain how they further the organization's exempt purpose in Part XIII.

5 During the year, did the organization solicit or receive donations of art, historical treasures, or other similar assets to be sold to raise funds rather than to be maintained as part of the organization's collection? ☐ Yes ☐ No

**Part IV Escrow and Custodial Arrangements.** Complete if the organization answered "Yes" to Form 990, Part IV, line 9, or reported an amount on Form 990, Part X, line 21.

1a Is the organization an agent, trustee, custodian or other intermediary for contributions or other assets not included on Form 990, Part X? ☐ Yes ☐ No

b If "Yes," explain the arrangement in Part XIII and complete the following table:

	Amount
c Beginning balance	1c
d Additions during the year	1d
e Distributions during the year	1e
f Ending balance	1f

2a Did the organization include an amount on Form 990, Part X, line 21? ☐ Yes ☐ No

b If "Yes," explain the arrangement in Part XIII. Check here if the explanation has been provided in Part XIII ☐

**Part V Endowment Funds.** Complete if the organization answered "Yes" to Form 990, Part IV, line 10.

	(a) Current year	(b) Prior year	(c) Two years back	(d) Three years back	(e) Four years back
1a Beginning of year balance					
b Contributions					
c Net investment earnings, gains, and losses					
d Grants or scholarships					
e Other expenditures for facilities and programs					
f Administrative expenses					
g End of year balance					

2 Provide the estimated percentage of the current year end balance (line 1g, column (a)) held as:

- a Board designated or quasi-endowment ☐ %  
 b Permanent endowment ☐ %  
 c Temporarily restricted endowment ☐ %

The percentages in lines 2a, 2b, and 2c should equal 100%.

3a Are there endowment funds not in the possession of the organization that are held and administered for the organization by:

- (i) unrelated organizations .....  
 (ii) related organizations .....

	Yes	No
3a(i)		
3a(ii)		
3b		

b If "Yes" to 3a(ii), are the related organizations listed as required on Schedule R? ☐

4 Describe in Part XIII the intended uses of the organization's endowment funds.

**Part VI Land, Buildings, and Equipment.**

Complete if the organization answered "Yes" to Form 990, Part IV, line 11a. See Form 990, Part X, line 10.

Description of property	(a) Cost or other basis (investment)	(b) Cost or other basis (other)	(c) Accumulated depreciation	(d) Book value
1a Land		87,500.		87,500.
b Buildings		1,151,659.	426,184.	725,475.
c Leasehold improvements				
d Equipment		70,051.	66,178.	3,873.
e Other		26,301.	2,630.	23,671.
<b>Total.</b> Add lines 1a through 1e. (Column (d) must equal Form 990, Part X, column (B), line 10(c).)				840,519.

Schedule D (Form 990) 2013

**Part VII Investments - Other Securities.**

Complete if the organization answered "Yes" to Form 990, Part IV, line 11b. See Form 990, Part X, line 12.

(a) Description of security or category (including name of security)	(b) Book value	(c) Method of valuation: Cost or end-of-year market value
(1) Financial derivatives .....		
(2) Closely-held equity interests .....		
(3) Other .....		
(A) .....		
(B) .....		
(C) .....		
(D) .....		
(E) .....		
(F) .....		
(G) .....		
(H) .....		
<b>Total.</b> (Col. (b) must equal Form 990, Part X, col. (B) line 12.) ▶		

**Part VIII Investments - Program Related.**

Complete if the organization answered "Yes" to Form 990, Part IV, line 11c. See Form 990, Part X, line 13.

(a) Description of investment	(b) Book value	(c) Method of valuation: Cost or end-of-year market value
(1) .....		
(2) .....		
(3) .....		
(4) .....		
(5) .....		
(6) .....		
(7) .....		
(8) .....		
(9) .....		
<b>Total.</b> (Col. (b) must equal Form 990, Part X, col. (B) line 13.) ▶		

**Part IX Other Assets.**

Complete if the organization answered "Yes" to Form 990, Part IV, line 11d. See Form 990, Part X, line 15.

(a) Description	(b) Book value
(1) .....	
(2) .....	
(3) .....	
(4) .....	
(5) .....	
(6) .....	
(7) .....	
(8) .....	
(9) .....	
<b>Total.</b> (Column (b) must equal Form 990, Part X, col. (B) line 15.) ▶	

**Part X Other Liabilities.**

Complete if the organization answered "Yes" to Form 990, Part IV, line 11e or 11f. See Form 990, Part X, line 25.

1. (a) Description of liability	(b) Book value
(1) Federal income taxes .....	
(2) .....	
(3) .....	
(4) .....	
(5) .....	
(6) .....	
(7) .....	
(8) .....	
(9) .....	
<b>Total.</b> (Column (b) must equal Form 990, Part X, col. (B) line 25.) ▶	

2. Liability for uncertain tax positions. In Part XIII, provide the text of the footnote to the organization's financial statements that reports the organization's liability for uncertain tax positions under FIN 48 (ASC 740). Check here if the text of the footnote has been provided in Part XIII ☒

**Part XI Reconciliation of Revenue per Audited Financial Statements With Revenue per Return.**

Complete if the organization answered "Yes" to Form 990, Part IV, line 12a.

<b>1</b>	Total revenue, gains, and other support per audited financial statements .....	<b>1</b>	<b>3,071,109.</b>
<b>2</b>	Amounts included on line 1 but not on Form 990, Part VIII, line 12:		
<b>a</b>	Net unrealized gains on investments .....	<b>2a</b>	
<b>b</b>	Donated services and use of facilities .....	<b>2b</b>	
<b>c</b>	Recoveries of prior year grants .....	<b>2c</b>	
<b>d</b>	Other (Describe in Part XIII.) .....	<b>2d</b>	<b>1,904,689.</b>
<b>e</b>	Add lines <b>2a</b> through <b>2d</b> .....	<b>2e</b>	<b>1,904,689.</b>
<b>3</b>	Subtract line <b>2e</b> from line <b>1</b> .....	<b>3</b>	<b>1,166,420.</b>
<b>4</b>	Amounts included on Form 990, Part VIII, line 12, but not on line 1:		
<b>a</b>	Investment expenses not included on Form 990, Part VIII, line 7b .....	<b>4a</b>	
<b>b</b>	Other (Describe in Part XIII.) .....	<b>4b</b>	<b>-36,081.</b>
<b>c</b>	Add lines <b>4a</b> and <b>4b</b> .....	<b>4c</b>	<b>-36,081.</b>
<b>5</b>	Total revenue. Add lines <b>3</b> and <b>4c</b> . (This must equal Form 990, Part I, line 12.) .....	<b>5</b>	<b>1,130,339.</b>

**Part XII Reconciliation of Expenses per Audited Financial Statements With Expenses per Return.**

Complete if the organization answered "Yes" to Form 990, Part IV, line 12a.

<b>1</b>	Total expenses and losses per audited financial statements .....	<b>1</b>	<b>2,934,753.</b>
<b>2</b>	Amounts included on line 1 but not on Form 990, Part IX, line 25:		
<b>a</b>	Donated services and use of facilities .....	<b>2a</b>	
<b>b</b>	Prior year adjustments .....	<b>2b</b>	
<b>c</b>	Other losses .....	<b>2c</b>	
<b>d</b>	Other (Describe in Part XIII.) .....	<b>2d</b>	<b>1,874,574.</b>
<b>e</b>	Add lines <b>2a</b> through <b>2d</b> .....	<b>2e</b>	<b>1,874,574.</b>
<b>3</b>	Subtract line <b>2e</b> from line <b>1</b> .....	<b>3</b>	<b>1,060,179.</b>
<b>4</b>	Amounts included on Form 990, Part IX, line 25, but not on line 1:		
<b>a</b>	Investment expenses not included on Form 990, Part VIII, line 7b .....	<b>4a</b>	
<b>b</b>	Other (Describe in Part XIII.) .....	<b>4b</b>	<b>85,643.</b>
<b>c</b>	Add lines <b>4a</b> and <b>4b</b> .....	<b>4c</b>	<b>85,643.</b>
<b>5</b>	Total expenses. Add lines <b>3</b> and <b>4c</b> . (This must equal Form 990, Part I, line 18.) .....	<b>5</b>	<b>1,145,822.</b>

**Part XIII Supplemental Information.**

Provide the descriptions required for Part II, lines 3, 5, and 9; Part III, lines 1a and 4; Part IV, lines 1b and 2b; Part V, line 4; Part X, line 2; Part XI, lines 2d and 4b; and Part XII, lines 2d and 4b. Also complete this part to provide any additional information.

Part X, Line 2:

Explanation: STANDARDS REQUIRE RECONGNITION AND MEASUREMENT OF UNCERTAIN  
TAX POSITIONS USING A "MORE-LIKELY-THAN-NOT" APPROACH. NO MATERIAL IMPACT  
ON ITS FINANCIAL STATEMENTS WAS NOTED FOR FISCAL YEARS NOVEMBER 30, 2014  
AND NOVEMBER 30, 2013.

Part XI, Line 2d - Other Adjustments:

SALES COMMISSIONS-SUBSIDIARY	1,811,447.
DEFERRED & ACCRUAL ADJ. PUBLIC EDUCATION PARTNERSHIP ADV.	87,500.
DEFERRED & ACCRUAL MEMBERSHIP DUES	5,742.
Total to Schedule D, Part XI, Line 2d	1,904,689.

**Part XIII** Supplemental Information (continued)

## Part XI, Line 4b - Other Adjustments:

EARNINGS EQUITY IN SUBSIDIARY	-36,082.
COMMISSIONS INCOME	1.
Total to Schedule D, Part XI, Line 4b	-36,081.

## Part XII, Line 2d - Other Adjustments:

SUBSIDIARY EXPENSES	1,848,779.
ACCRUAL AUDIT ADJUSTMENTS: DUES & SUBSCRIPTIONS	7,124.
ACCRUAL AUDIT ADJUSTMENTS: DEPRECIATION	1.
ACCRUAL AUDIT ADJUSTMENTS: INSURANCE	400.
ACCRUAL AUDIT ADJUSTMENTS: MEALS & ENT.	209.
ACCRUAL AUDIT ADJUSTMENTS: MEETINGS - ANNUAL CONFERENCE	231.
ACCRUAL AUDIT ADJUSTMENTS: MEETINGS - NAB CONVENTION	1,320.
ACCRUAL AUDIT ADJUSTMENTS: MISCELLANEOUS	8,077.
ACCRUAL AUDIT ADJUSTMENTS: OFFICE SUPPLIES	100.
ACCRUAL AUDIT ADJUSTMENTS: POSTAGE	698.
ACCRUAL AUDIT ADJUSTMENTS: PROFESSIONAL FEES	2,370.
ACCRUAL AUDIT ADJUSTMENTS: SEMINAR EXP.	2,345.
ACCRUAL AUDIT ADJUSTMENTS: TRAVEL-OTHER	1,873.
ACCRUAL AUDIT ADJUSTMENTS: UTILITIES	368.
ACCRUAL AUDIT ADJUSTMENTS: BUILDING MAINT.	679.
Total to Schedule D, Part XII, Line 2d	1,874,574.

## Part XII, Line 4b - Other Adjustments:

ACCRUAL AUDIT ADJUSTMENTS: COMMISSION EXP.	80,728.
ACCRUAL AUDIT ADJUSTMENTS: MEMBER SERVICES	4,564.
ACCRUAL AUDIT ADJUSTMENTS: TELEPHONE	141.
ACCRUAL AUDIT ADJUSTMENTS: STORAGE RENTAL	210.



**Part XIII** Supplemental Information *(continued)*

Total to Schedule D, Part XII, Line 4b 85,643.

Blank lines for supplemental information.

**1** Does the organization maintain records to substantiate the amount of the grants or assistance, the grantees' eligibility for the grants or assistance, and the selection criteria used to award the grants or assistance?

**2 Describe in Part IV the organization's procedures for monitoring the use of grant funds in the United States.**

**Part II** Grants and Other Assistance to Governments and Organizations in the United States. Complete if the organization answered "Yes" to Form 990, Part IV, line 21, for any recipient that received more than \$5,000. Part II can be duplicated if additional space is needed.

[illegible]

**2** Enter total number of section 501(c)(3) and government organizations listed in the line 1 table

**3** Enter total number of other organizations listed in the line 1 table

**LHA** For Paperwork Reduction Act Notice, see the Instructions for Form 990.

Schedule I (Form 990) (2013)



Part IV	Supplemental Information
---------	--------------------------

WILL BE ENTERING POSTSECONDARY EDUCATION IN THE FALL. THE STUDENT MUST ATTEND FULL TIME: A COLLEGE, UNIVERSITY, VOCATIONAL SCHOOL, INSTITUTE OF TECHNOLOGY, OR ACADEMY THAT AWARDS ACADEMIC DEGREES OR PROFESSIONAL CERTIFICATIONS. THERE IS NO MINIMUM GPA REQUIREMENT TO APPLY. HOWEVER, PREFERENCE WILL BE SHOWN TO STUDENTS WHO DEMONSTRATE GOOD SCHOLASTIC ABILITY. SCHOLARSHIPS ARE MADE ON AN ANNUAL BASIS AND ARE NON-RENEWABLE. THE AMOUNT OF SCHOLARSHIP AN INDIVIDUAL CAN RECEIVE IS UP TO \$1500. KBA ISSUED THIS SCHOLARSHIP TO 14 HIGH SCHOOL SENIORS TOTALING \$21,000.

**SCHEDULE J  
(Form 990)**

**Compensation Information**

OMB No. 1545-0047

**2013**

Open to Public  
Inspection

Department of the Treasury  
Internal Revenue Service

For certain Officers, Directors, Trustees, Key Employees, and Highest  
Compensated Employees

▶ Complete if the organization answered "Yes" on Form 990, Part IV, line 23.

▶ Attach to Form 990. ▶ See separate instructions.

▶ Information about Schedule J (Form 990) and its instructions is at [www.irs.gov/form990](http://www.irs.gov/form990).

Name of the organization

**KENTUCKY BROADCASTERS ASSOCIATION, INC.**

Employer identification number

**61-0663764**

**Part I Questions Regarding Compensation**

**1a** Check the appropriate box(es) if the organization provided any of the following to or for a person listed in Form 990, Part VII, Section A, line 1a. Complete Part III to provide any relevant information regarding these items.

☐ First-class or charter travel

☐ Housing allowance or residence for personal use

☐ Travel for companions

☐ Payments for business use of personal residence

☐ Tax indemnification and gross-up payments

☒ Health or social club dues or initiation fees

☐ Discretionary spending account

☐ Personal services (e.g., maid, chauffeur, chef)

**b** If any of the boxes on line 1a are checked, did the organization follow a written policy regarding payment or reimbursement or provision of all of the expenses described above? If "No," complete Part III to explain

**1b**

**X**

**2** Did the organization require substantiation prior to reimbursing or allowing expenses incurred by all directors, trustees, and officers, including the CEO/Executive Director, regarding the items checked in line 1a?

**2**

**X**

**3** Indicate which, if any, of the following the filing organization used to establish the compensation of the organization's CEO/Executive Director. Check all that apply. Do not check any boxes for methods used by a related organization to establish compensation of the CEO/Executive Director, but explain in Part III.

☐ Compensation committee

☒ Written employment contract

☐ Independent compensation consultant

☐ Compensation survey or study

☐ Form 990 of other organizations

☒ Approval by the board or compensation committee

**4** During the year, did any person listed in Form 990, Part VII, Section A, line 1a, with respect to the filing organization or a related organization:

**a** Receive a severance payment or change-of-control payment?

**4a**

**X**

**b** Participate in, or receive payment from, a supplemental nonqualified retirement plan?

**4b**

**X**

**c** Participate in, or receive payment from, an equity-based compensation arrangement?

**4c**

**X**

If "Yes" to any of lines 4a-c, list the persons and provide the applicable amounts for each item in Part III.

**Only section 501(c)(3) and 501(c)(4) organizations must complete lines 5-9.**

**5** For persons listed in Form 990, Part VII, Section A, line 1a, did the organization pay or accrue any compensation contingent on the revenues of:

**a** The organization?

**5a**

**b** Any related organization?

**5b**

If "Yes" to line 5a or 5b, describe in Part III.

**6** For persons listed in Form 990, Part VII, Section A, line 1a, did the organization pay or accrue any compensation contingent on the net earnings of:

**a** The organization?

**6a**

**b** Any related organization?

**6b**

If "Yes" to line 6a or 6b, describe in Part III.

**7** For persons listed in Form 990, Part VII, Section A, line 1a, did the organization provide any non-fixed payments not described in lines 5 and 6? If "Yes," describe in Part III

**7**

**8** Were any amounts reported in Form 990, Part VII, paid or accrued pursuant to a contract that was subject to the initial contract exception described in Regulations section 53.4958-4(a)(3)? If "Yes," describe in Part III

**8**

**9** If "Yes" to line 8, did the organization also follow the rebuttable presumption procedure described in Regulations section 53.4958-6(c)?

**9**

LHA For Paperwork Reduction Act Notice, see the Instructions for Form 990.

Schedule J (Form 990) 2013



Part III Supplemental Information

Provide the information, explanation, or descriptions required for Part I, lines 1a, 1b, 3, 4a, 4b, 5a, 5b, 6a, 6b, 7, and 8, and for Part II. Also complete this part for any additional information.

Part I, Line 1a:

Explanation: KBA PROVIDES COUNTRY CLUB DUES FOR THE EXECUTIVE DIRECTOR

AS PART OF THE WRITTEN EMPLOYMENT CONTRACT THAT IS EVALUATED

ANNUALLY BY THE BOARD OF DIRECTORS. THE USE OF THE CLUB

FACILITIES SERVES NUMEROUS BUSINESS PURPOSES FOR KBA.

THESE EXPENSES FOR FISCAL YEAR END 11/30/14 TOTALED \$4195.

**SCHEDULE O**  
**(Form 990 or 990-EZ)**

Department of the Treasury  
Internal Revenue Service

**Supplemental Information to Form 990 or 990-EZ**

Complete to provide information for responses to specific questions on  
Form 990 or 990-EZ or to provide any additional information.

▶ Attach to Form 990 or 990-EZ.

▶ Information about Schedule O (Form 990 or 990-EZ) and its instructions is at [www.irs.gov/form990](http://www.irs.gov/form990).

OMB No. 1545-0047

**2013**

Open to Public  
Inspection

Name of the organization

KENTUCKY BROADCASTERS ASSOCIATION, INC.

Employer identification number

61-0663764

Form 990, Part III, Line 1, Description of Organization Mission:

meetings and publications, and provide educational services through  
conventions, workshops, or other appropriate means in order to better  
serve the public.

Form 990, Part VI, Section A, line 6:

Explanation: MEMBERS.

Form 990, Part VI, Section A, line 7a:

Explanation: MEMBERS.

Form 990, Part VI, Section A, line 7b:

Explanation: ONLY IF CHANGES TO THE BYLAWS ARE TO BE MADE.

Form 990, Part VI, Section B, line 11:

Explanation: THE 990 IS REVIEWED (BEFORE FILING) BY THE BOARD EITHER AT A  
BOARD MEETING OR BY ELECTRONIC FORMATE VIEWING ALONG WITH A CONFERENCE  
CALL.

Form 990, Part VI, Section B, Line 12c:

Explanation: ON AN ANNUAL BASIS EACH BOARD MEMBER AND EMPLOYEES OF KBA ARE  
TO REPORT ANY CONFLICT OF INTEREST.

Form 990, Part VI, Section B, Line 15:

Explanation: ANNUALLY THE BOARD OF DIRECTORS MEET TO SET THE EXECUTIVE  
OFFICER'S COMPENSATION. INDUSTRY COMPARABLE DATA AND CURRENT FINANCIAL



Name of the organization

KENTUCKY BROADCASTERS ASSOCIATION, INC.

Employer identification number

61-0663764

HEALTH ARE DETERMINING FACTORS. MINUTES OF THESE MEETINGS ARE KEPT ON FILE.

Form 990, Part VI, Section C, Line 19:

Explanation: KBA WILL PROVIDE THEIR GOVERNING DOCUMENTS, CONFLICT OF INTEREST STATEMENT, FINANCIAL STATEMENTS, 990'S AND NON-PROFIT APPLICATION TO THE PUBLIC UPON REQUEST.

Form 990, Part IX, Line 24e, All Other Functional Expenses:

MISC. LABOR	15,895.
UTILITIES	14,404.
CONSULTING FEES	12,000.
PROPERTY TAXES	6,305.
DUES & SUBSCRIPTIONS	5,935.
NEWSLETTER EXP.	5,718.
POSTAGE	3,907.
BANK SERVICE CHARGES	3,100.
ADMINISTRATIVE EXP.	3,010.
MISC. EXP.	1,667.
EQUIPMENT LEASE & MAINT.	1,297.
STORAGE RENT	210.
OTHER TAX & LIC.	43.
Total Other Expenses on Form 990, Part IX, line 24e, Col A	73,491.

FORM 990 PART XII LINE 2c

Explanation: NO CHANGES HAVE BEEN MADE TO THE PROCESS.





**Part V Transactions With Related Organizations** Complete if the organization answered "Yes" on Form 990, Part IV, line 34, 35b, or 36.**Note.** Complete line 1 if any entity is listed in Parts II, III, or IV of this schedule.**1** During the tax year, did the organization engage in any of the following transactions with one or more related organizations listed in Parts II-IV?

	Yes	No
<b>a</b> Receipt of (i) interest (ii) annuities (iii) royalties or (iv) rent from a controlled entity		<input checked="" type="checkbox"/>
<b>b</b> Gift, grant, or capital contribution to related organization(s)		<input checked="" type="checkbox"/>
<b>c</b> Gift, grant, or capital contribution from related organization(s)		<input checked="" type="checkbox"/>
<b>d</b> Loans or loan guarantees to or for related organization(s)		<input checked="" type="checkbox"/>
<b>e</b> Loans or loan guarantees by related organization(s)		<input checked="" type="checkbox"/>
<b>f</b> Dividends from related organization(s)		<input checked="" type="checkbox"/>
<b>g</b> Sale of assets to related organization(s)		<input checked="" type="checkbox"/>
<b>h</b> Purchase of assets from related organization(s)		<input checked="" type="checkbox"/>
<b>i</b> Exchange of assets with related organization(s)		<input checked="" type="checkbox"/>
<b>j</b> Lease of facilities, equipment, or other assets to related organization(s)		<input checked="" type="checkbox"/>
<b>k</b> Lease of facilities, equipment, or other assets from related organization(s)		<input checked="" type="checkbox"/>
<b>l</b> Performance of services or membership or fundraising solicitations for related organization(s)		<input checked="" type="checkbox"/>
<b>m</b> Performance of services or membership or fundraising solicitations by related organization(s)		<input checked="" type="checkbox"/>
<b>n</b> Sharing of facilities, equipment, mailing lists, or other assets with related organization(s)		<input checked="" type="checkbox"/>
<b>o</b> Sharing of paid employees with related organization(s)		<input checked="" type="checkbox"/>
<b>p</b> Reimbursement paid to related organization(s) for expenses		<input checked="" type="checkbox"/>
<b>q</b> Reimbursement paid by related organization(s) for expenses		<input checked="" type="checkbox"/>
<b>r</b> Other transfer of cash or property to related organization(s)		<input checked="" type="checkbox"/>
<b>s</b> Other transfer of cash or property from related organization(s)		<input checked="" type="checkbox"/>

**2** If the answer to any of the above is "Yes," see the instructions for information on who must complete this line, including covered relationships and transaction thresholds.

(a) Name of related organization	(b) Transaction type (a-s)	(c) Amount involved	(d) Method of determining amount involved
KBA LOANED MONIES FOR SUBSIDIARY'S OPERATIONS	D	55,000.	AS NEEDED
KBA PROVIDES SUBSIDIARY THE USE OF THEIR FACILITY & OFFICE EQUIPMENT	N	0.	AMOUNT OF USAGE IS MINIMAL
(3) SUBSIDIARY PAYS KBA EMPLOYEES COMMISSIONS	O	41,517.	
(4)			
(5)			
(6)			

32



**Depreciation and Amortization** 990  
(Including Information on Listed Property)

▶ See separate instructions.

▶ Attach to your tax return.

Name(s) shown on return

Business or activity to which this form relates

Identifying number

**KENTUCKY BROADCASTERS ASSOCIATION, INC.** Form 990 Page 10

61-0663764

**Part I** Election To Expense Certain Property Under Section 179 *Note: If you have any listed property, complete Part V before you complete Part I.*

1	Maximum amount (see instructions)	1	500,000.
2	Total cost of section 179 property placed in service (see instructions)	2	
3	Threshold cost of section 179 property before reduction in limitation	3	2,000,000.
4	Reduction in limitation. Subtract line 3 from line 2. If zero or less, enter -0-	4	
5	Dollar limitation for tax year. Subtract line 4 from line 1. If zero or less, enter -0-. If married filing separately, see instructions	5	
6	(a) Description of property	(b) Cost (business use only)	(c) Elected cost
7	Listed property. Enter the amount from line 29	7	
8	Total elected cost of section 179 property. Add amounts in column (c), lines 6 and 7	8	
9	Tentative deduction. Enter the smaller of line 5 or line 8	9	
10	Carryover of disallowed deduction from line 13 of your 2012 Form 4562	10	
11	Business income limitation. Enter the smaller of business income (not less than zero) or line 5	11	
12	Section 179 expense deduction. Add lines 9 and 10, but do not enter more than line 11	12	
13	Carryover of disallowed deduction to 2014. Add lines 9 and 10, less line 12	13	

**Note:** Do not use Part II or Part III below for listed property. Instead, use Part V.**Part II** Special Depreciation Allowance and Other Depreciation (Do not include listed property.)

14	Special depreciation allowance for qualified property (other than listed property) placed in service during the tax year	14	
15	Property subject to section 168(f)(1) election	15	
16	Other depreciation (including ACRS)	16	37,858.

**Part III** MACRS Depreciation (Do not include listed property.) (See instructions.)**Section A**

17	MACRS deductions for assets placed in service in tax years beginning before 2013	17	
18	If you are electing to group any assets placed in service during the tax year into one or more general asset accounts, check here		

**Section B - Assets Placed in Service During 2013 Tax Year Using the General Depreciation System**

(a) Classification of property	(b) Month and year placed in service	(c) Basis for depreciation (business/investment use only - see instructions)	(d) Recovery period	(e) Convention	(f) Method	(g) Depreciation deduction
19a 3-year property						
b 5-year property						
c 7-year property						
d 10-year property						
e 15-year property						
f 20-year property						
g 25-year property			25 yrs.		S/L	
h Residential rental property	/		27.5 yrs.	MM	S/L	
	/		27.5 yrs.	MM	S/L	
i Nonresidential real property	08 / 14	4,850.	39 yrs.	MM	S/L	36.
	/			MM	S/L	

**Section C - Assets Placed in Service During 2013 Tax Year Using the Alternative Depreciation System**

20a	Class life				S/L	
b	12-year		12 yrs.		S/L	
c	40-year	/	40 yrs.	MM	S/L	

**Part IV** Summary (See instructions.)

21	Listed property. Enter amount from line 28	21	2,630.
22	Total. Add amounts from line 12, lines 14 through 17, lines 19 and 20 in column (g), and line 21. Enter here and on the appropriate lines of your return. Partnerships and S corporations - see instr.	22	40,524.
23	For assets shown above and placed in service during the current year, enter the portion of the basis attributable to section 263A costs	23	

**Part V** **Listed Property** (Include automobiles, certain other vehicles, certain computers, and property used for entertainment, recreation, or amusement.)

**Note:** For any vehicle for which you are using the standard mileage rate or deducting lease expense, complete **only** 24a, 24b, columns (a) through (c) of Section A, all of Section B, and Section C if applicable.

**Section A - Depreciation and Other Information** (Caution: See the instructions for limits for passenger automobiles.)

**24a** Do you have evidence to support the business/investment use claimed? ☒ **Yes** ☐ **No** **24b** If "Yes," is the evidence written? ☒ **Yes** ☐ **No**

(a) Type of property (list vehicles first)	(b) Date placed in service	(c) Business/ investment use percentage	(d) Cost or other basis	(e) Basis for depreciation (business/investment use only)	(f) Recovery period	(g) Method/ Convention	(h) Depreciation deduction	(i) Elected section 179 cost
--	-------------------------------------	--	-------------------------------	--	---------------------------	------------------------------	----------------------------------	---------------------------------------

**25** Special depreciation allowance for qualified listed property placed in service during the tax year and used more than 50% in a qualified business use ..... **25**

**26** Property used more than 50% in a qualified business use:

VEHICLE	03/18/14	100.00 %	26,301.	26,301.	5YRS	SL-YAL	2,630.	
	:	:						
	:	:						

**27** Property used 50% or less in a qualified business use:

	:	:				S/L -		
	:	:				S/L -		
	:	:				S/L -		

**28** Add amounts in column (h), lines 25 through 27. Enter here and on line 21, page 1 ..... **28** 2,630.

**29** Add amounts in column (i), line 26. Enter here and on line 7, page 1 ..... **29**

**Section B - Information on Use of Vehicles**

Complete this section for vehicles used by a sole proprietor, partner, or other "more than 5% owner," or related person. If you provided vehicles to your employees, first answer the questions in Section C to see if you meet an exception to completing this section for those vehicles.

	(a) Vehicle	(b) Vehicle	(c) Vehicle	(d) Vehicle	(e) Vehicle	(f) Vehicle
<b>30</b> Total business/investment miles driven during the year (do not include commuting miles) .....						
<b>31</b> Total commuting miles driven during the year ...						
<b>32</b> Total other personal (noncommuting) miles driven .....						
<b>33</b> Total miles driven during the year. Add lines 30 through 32 .....						
<b>34</b> Was the vehicle available for personal use during off-duty hours? .....	Yes	No	Yes	No	Yes	No
<b>35</b> Was the vehicle used primarily by a more than 5% owner or related person? .....						
<b>36</b> Is another vehicle available for personal use? .....						

**Section C - Questions for Employers Who Provide Vehicles for Use by Their Employees**

Answer these questions to determine if you meet an exception to completing Section B for vehicles used by employees who are not more than 5% owners or related persons.

<b>37</b> Do you maintain a written policy statement that prohibits all personal use of vehicles, including commuting, by your employees? .....	Yes	No
<b>38</b> Do you maintain a written policy statement that prohibits personal use of vehicles, except commuting, by your employees? See the instructions for vehicles used by corporate officers, directors, or 1% or more owners .....		
<b>39</b> Do you treat all use of vehicles by employees as personal use? .....		
<b>40</b> Do you provide more than five vehicles to your employees, obtain information from your employees about the use of the vehicles, and retain the information received? .....		
<b>41</b> Do you meet the requirements concerning qualified automobile demonstration use? .....		

**Note:** If your answer to 37, 38, 39, 40, or 41 is "Yes," do not complete Section B for the covered vehicles.

**Part VI** **Amortization**

(a) Description of costs	(b) Date amortization begins	(c) Amortizable amount	(d) Code section	(e) Amortization period or percentage	(f) Amortization for this year
-----------------------------	------------------------------------	------------------------------	------------------------	---	--------------------------------------

**42** Amortization of costs that begins during your 2013 tax year:

	:	:			
	:	:			

**43** Amortization of costs that began before your 2013 tax year ..... **43**

**44** **Total.** Add amounts in column (f). See the instructions for where to report ..... **44**